

Research study seeks survey participants for a study about bereavement experiences in British Columbia

Victoria Hospice is pleased to be working on this provincial study conducted by the **BC Centre for Palliative Care** and the **University of British Columbia's Division of Palliative Care**.

The study looks at bereavement experiences and supports in British Columbia. The findings of the study will inform the development of priority actions and strategies to make effective supports accessible to more British Columbians with bereavement experiences. We have recently completed interviews with the bereaved and now have developed a survey to capture more experiences. Additionally, we have expanded the participation criteria.

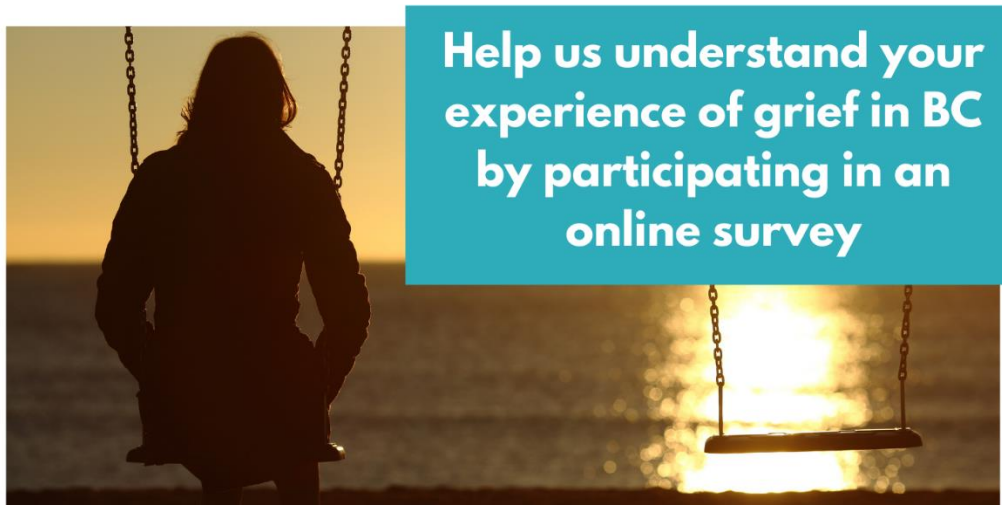
We are looking for British Columbians who experienced a death of someone that was important to them since March 1, 2020.

The survey should take approximately 15 minutes. It asks about:

- The experience of grief following the death or deaths
- Whether and how it was affected by the pandemic
- What resources and grief supports (formal and informal) were used
- What changes would they like to see to grief support services in BC

If you know anybody who might be interested in participating in the survey, please send them the survey link: https://ubc.ca1.qualtrics.com/jfe/form/SV_bBphBxDPL0pPwvy

The deadline to participate is March 25, 2022.



Use the link below to share your grief experience following a death that was important to you since March 2020

Please do not hesitate to reach out to Joshua Black, Research Manager, BC Centre for Palliative Care, at jblack@bc-cpc.ca or 604-553-4866 ext. 230 should you have any questions or concerns.